

space for your success®



# **XMatik**<sup>®</sup>.NET/ISED

INFORMATION SYSTEM  
FOR ELECTRICAL  
POWER DISPATCHING

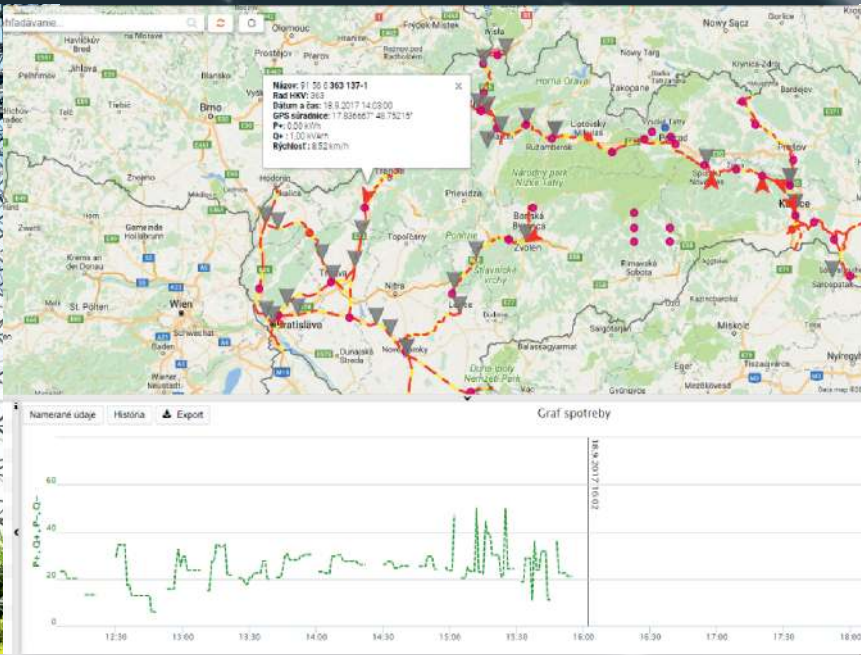
CONSUMPTION OF ALL TRAINS  
IN YOUR HANDS

PLANNING | LOCALIZATION | MEASUREMENT | PREDICTION | REPORTS



#### WHAT YOU GAIN

- a comprehensive solution for electrical power dispatching for the administrator of the infrastructure and the transporter in rail transport
- automated data collection from multiple sources and its evaluation
- saving on costs related to consumption of electricity
- publishing documentation for commercial partners through an intuitive interface
- advanced monitoring of efficiency of operations of trains as



### CHARACTERISTICS

#### POSITION, MEASUREMENT, CONSUMPTION

XMatik®.NET/ISED provides a comprehensive overview of recorded trains. Using dynamic graphical visualization of objects on the map base, data is provided on the status, current position, consumption and measurements on the train and the Points of Delivery as part of a whole system including historical data.

#### PREDICTION OF CONSUMPTION

The system, using the timetable of rail transport, predicts the planned consumption of electricity during the period of chart data.

#### OPTIMIZING COSTS

On the basis of the data used to monitor the energy efficiency of the operation of power equipment, it is possible to reduce the operating costs associated with the maintenance of measuring equipment and locomotives. Planning of consumption according to timetable, serve as the basis for reducing the costs associated with the electricity market participant's activities.

#### VALIDATION AND SUBSTITUTIVE VALUES

The absence of measurements for the reason of failure of communication or measuring systems is addressed automatically by generating substitutive values to provide timely evaluation, validation, post-processing and sending of measured data to systems of third parties.

#### ALARMS IN REAL TIME

In the event of adverse conditions related to the operation of the traction system and trains, system users are immediately alerted by means of alarms.

#### TECHNICAL AND COMMERCIAL RECORDS

The system enables the recording of the transport routes and infrastructure, including the technical records of locomotives as well as contractual relations with suppliers and customers.

#### CREATING REPORTS AND INVOICES

As required, it is possible to generate the documentation and reports needed for further processing in office software (MS Office). The materials generated on the basis of measurements and contractual relationships are automatically processed into invoices and sent to accounting systems and recipients.

#### CENTRALIZATION OF DATA

Support for data collection from multiple systems offers integrated processing and evaluation of data and the related creation of documents and reports.

#### CONFIGURABILITY

Support for the setting the display of data with different levels of granularity, units, or graphical and tabular settings of various overviews, configuration of connection of the traction system or support for user defined mathematical formulas.

### LIST OF MODULES

PROCESSING OF MEASUREMENTS

PREDICTION OF CONSUMPTION

TECHNICAL AND COMMERCIAL RECORDS

ADMINISTRATION OF FORMULAS

ADMINISTRATION OF THE TIMETABLE

ADMINISTRATION OF CONNECTION AREAS

REPORTING

### FUTHER INFORMATION



### CONTACTS

#### ADDRESS

sféra, a.s., Karadžičova 2, 811 08 Bratislava  
Slovakia

TEL: +421 (2) 502 13 142  
E-MAIL: obchod@sfera.sk  
www.sfera.sk

